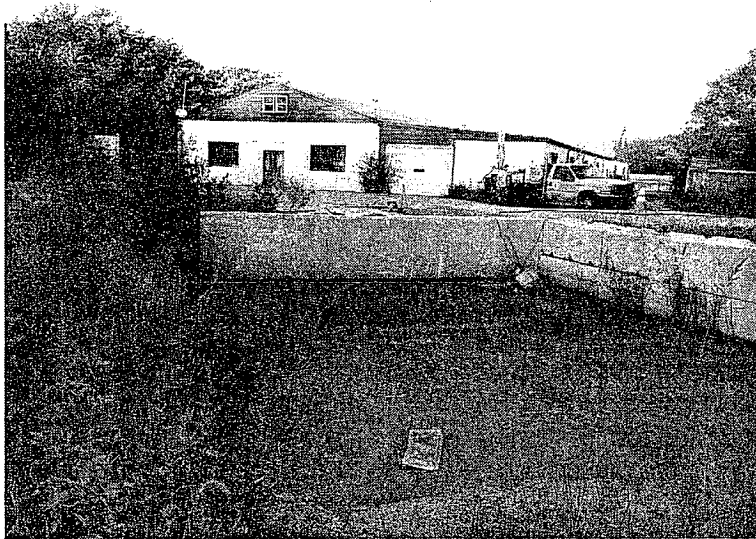




Photograph 1:
View of 1146
Haskell, facing
northeast



Photograph 2:
View of 1146
Haskell, facing
west



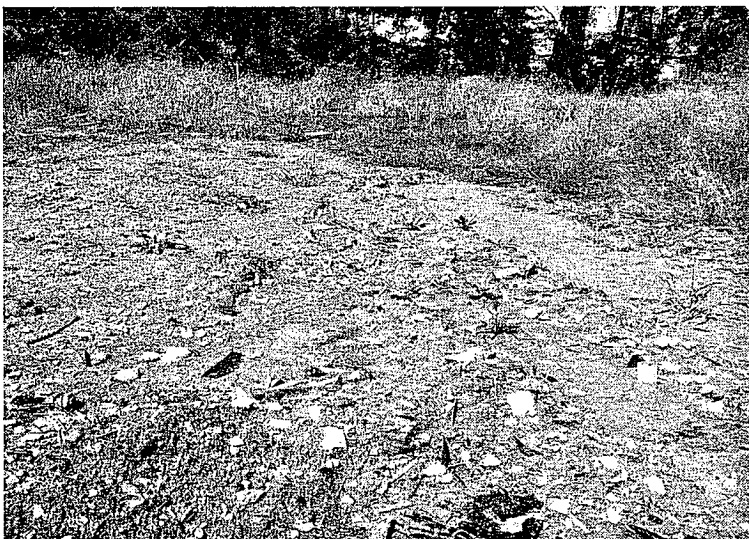
Photograph 3:
View of 1146
Haskell, facing
east-southeast



Photograph 4:
View of 1146
Haskell,
northwest corner
by Burroughs
Creek facing east



Photograph 5:
View of runoff
collection area
and asphalt in the
background,
facing east



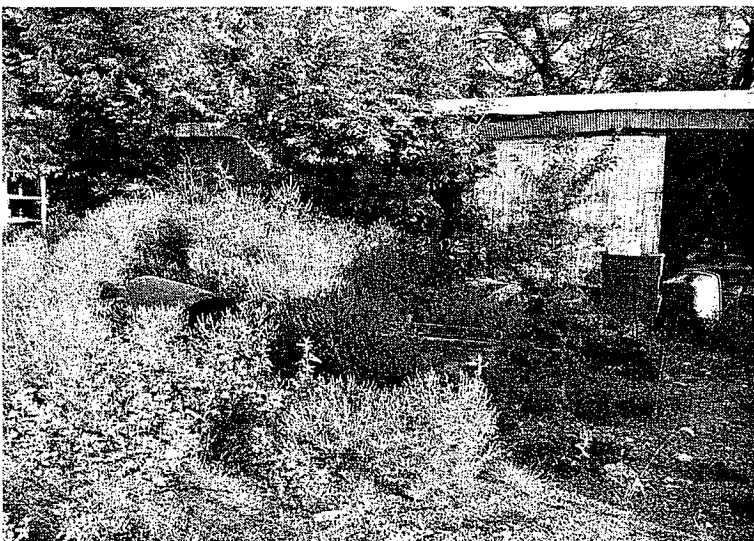
Photograph 6:
View of runoff
collection area
and embedded
debris, facing
north



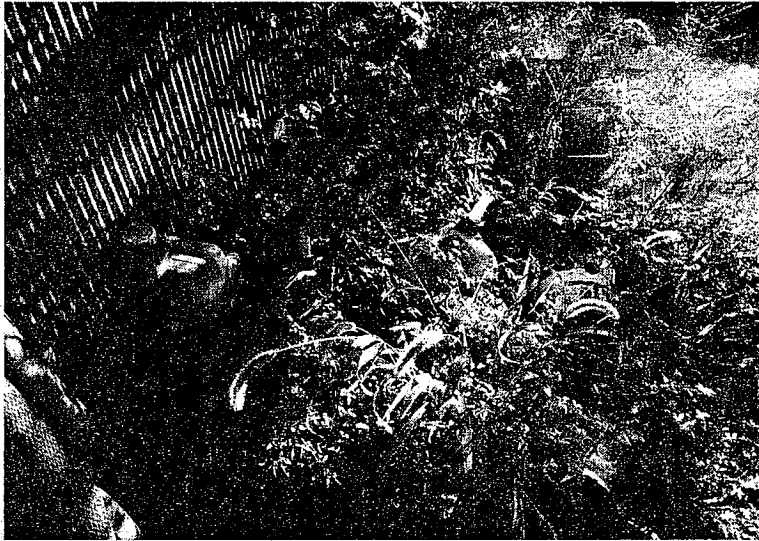
Photograph 7:
View of runoff
collection area,
facing north-
northeast



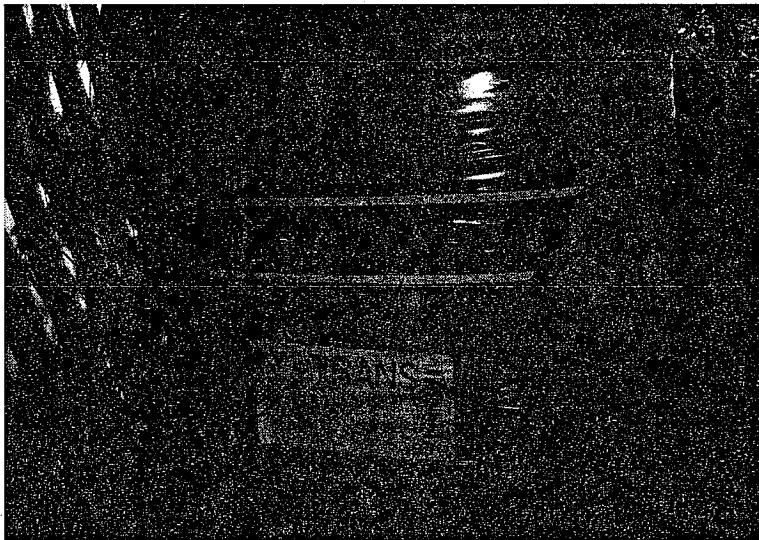
Photograph 8:
View of asphalt
and rock near
north-central
portion of
property, facing
east.



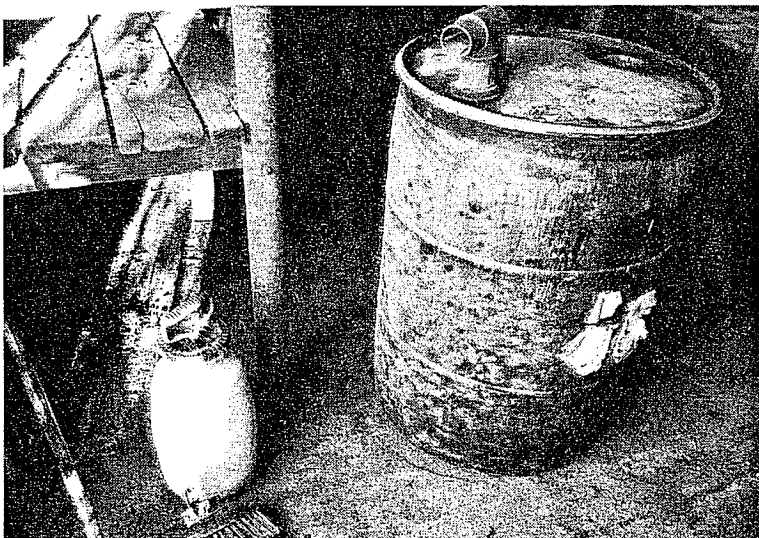
Photograph 9:
View of debris
outside
wooden/metal
building, facing
north-northwest



Photograph 10:
View of partially full fuel, paint, and hydraulic fluid containers outside wood/metal building, facing northeast



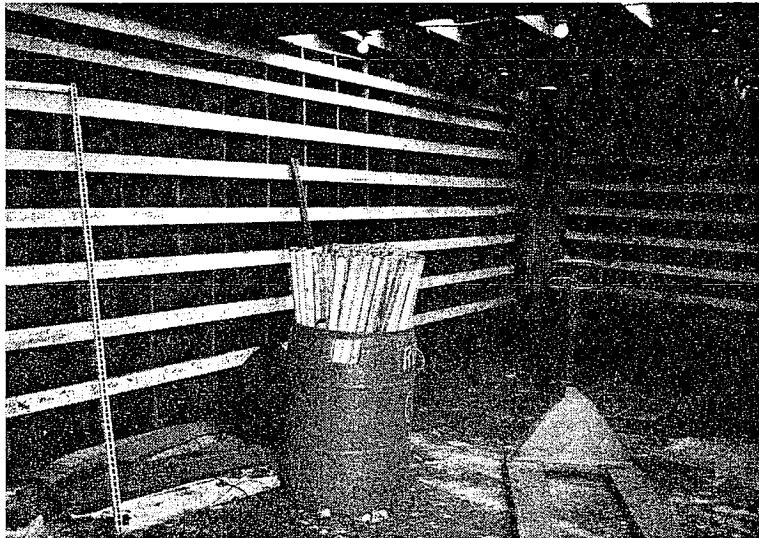
Photograph 11:
View of contents label of hydraulic fuel container outside building, facing northeast



Photograph 12:
View of partially full pesticide container and barrel (contents unknown) inside wood/metal building, facing northwest



Photograph 13:
View of stain on
concrete floor of
metal/wood
building, facing
north



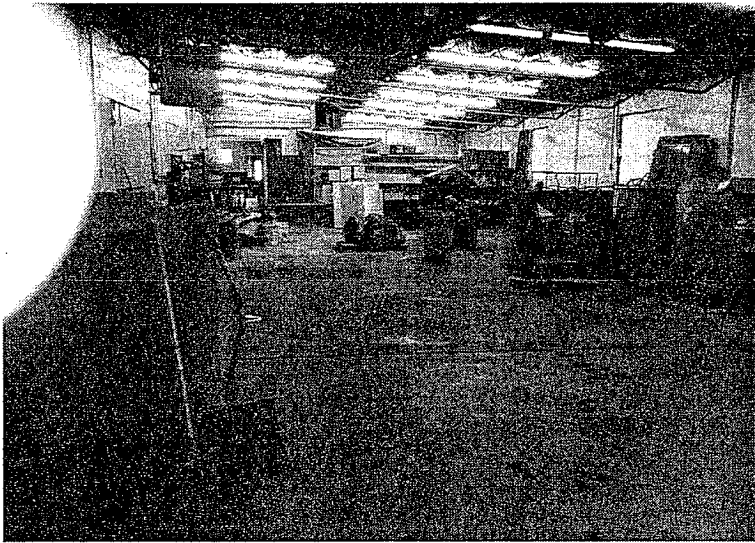
Photograph 14:
View of
fluorescent tube
lights inside
westernmost
wood building,
facing northeast



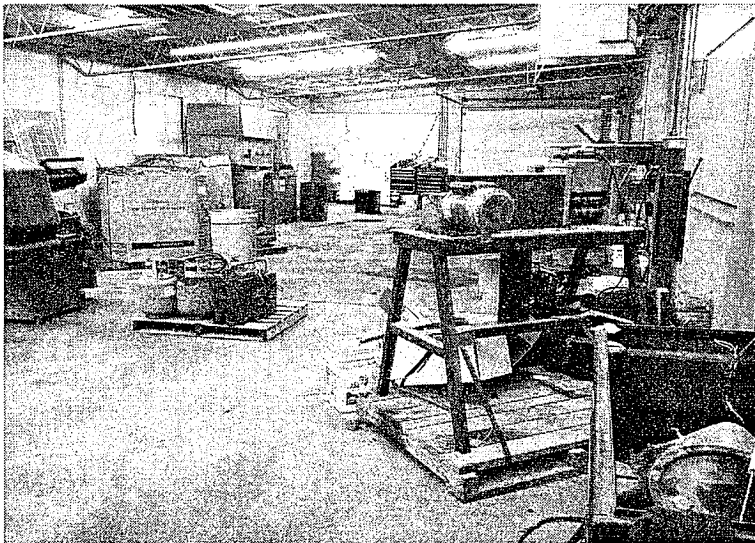
Photograph 15:
View inside main
building showing
office area, facing
northeast



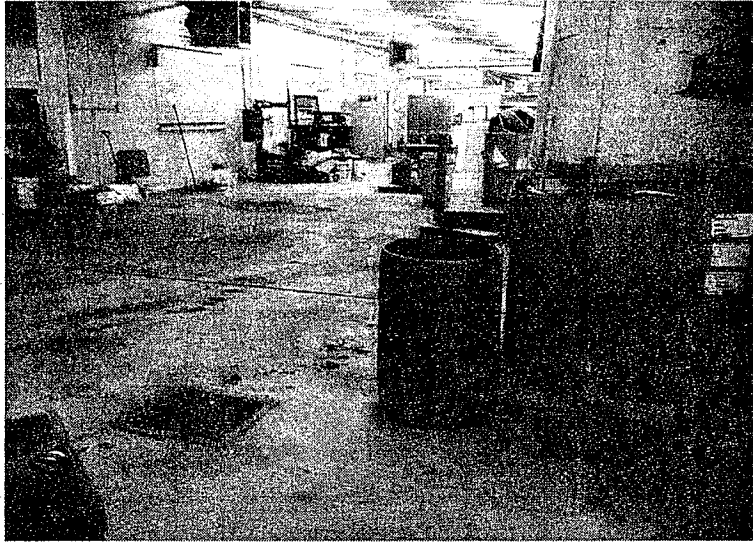
Photograph 13:
View inside main building showing store front, facing northeast



Photograph 17:
View inside main building storage area, facing west



Photograph 18:
View inside main building storage area, facing east



Photograph 19:
View inside main building storage area, facing southwest



Photograph 20:
View of old fuel cans inside main building storage area, facing west



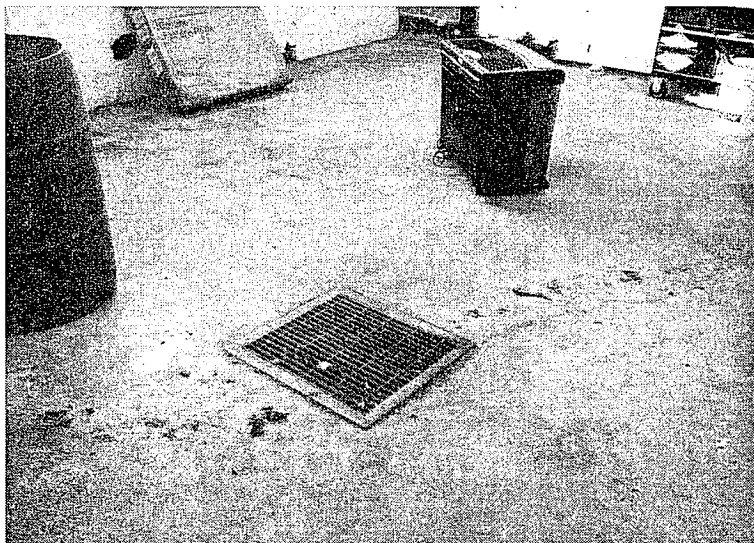
Photograph 21:
View of paint and stain containers inside main building storage area



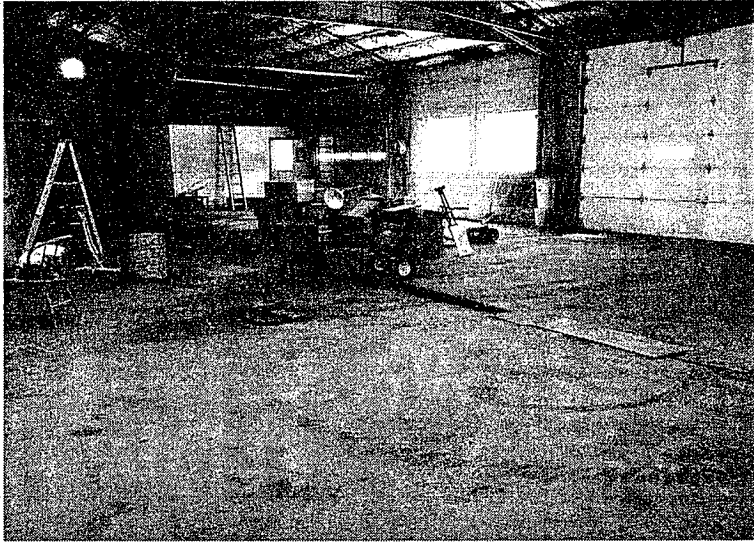
Photograph 22:
View of paint and stain containers inside main building storage area



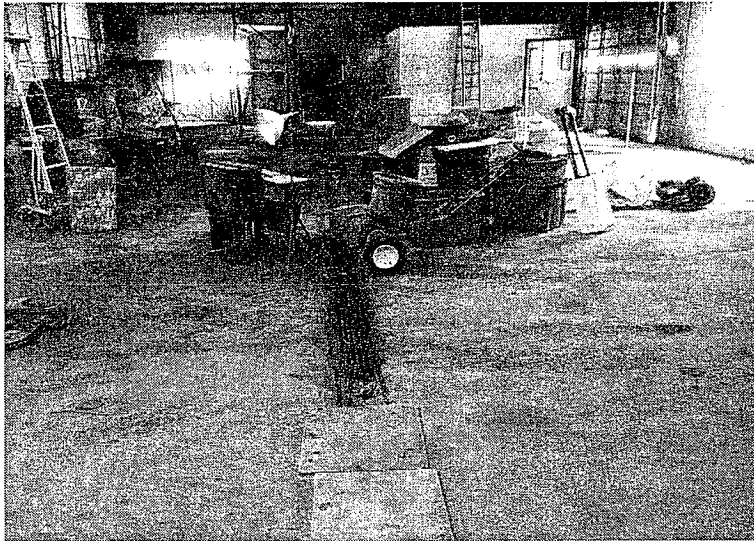
Photograph 23:
View of paint and stain containers inside main building storage area



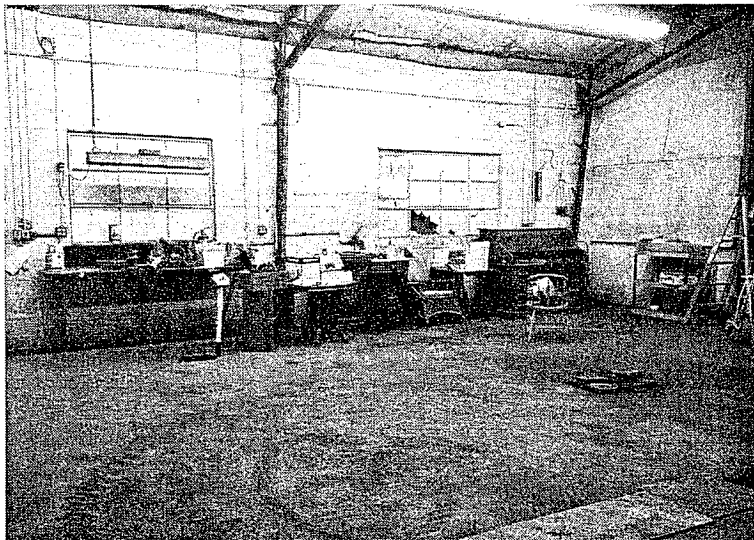
Photograph 24:
View of drain in storage area which was also a former auto service area (drainage point unknown)



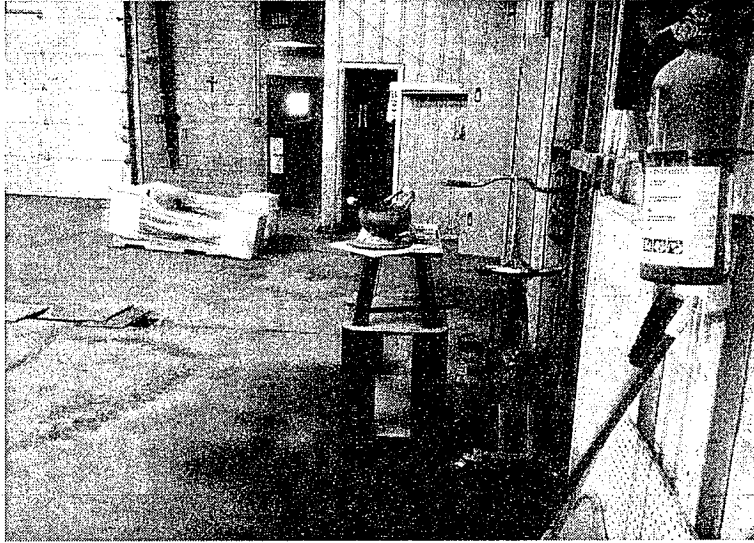
Photograph 25:
View of former
service area in
main building,
facing southeast



Photograph 26:
View of former
service area in
main building
(broken floor
drain in front),
facing east



Photograph 27:
View of
workspace in
service area of
main building,
facing northeast



Photograph 28:
View of stained floor inside former service area of main building, facing west



Photograph 29:
View of stained floor near floor drain in service area of main building, facing west



Photograph 30:
View of containers on pallet with stain underneath in service area of main building, facing northwest



Photograph 31:
View of stained
floor and
containers on
pallet close up,
facing northwest



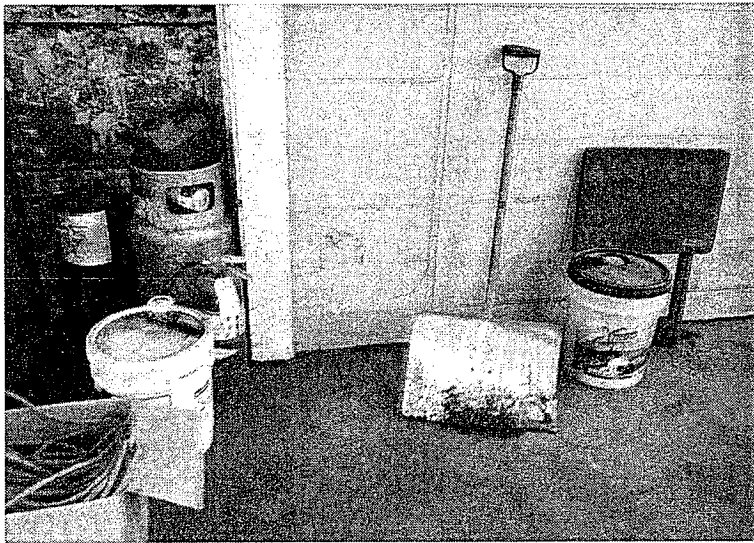
Photograph 32:
View of paint and
weatherproofing
containers in
main building



Photograph 33:
View of paint and
lacquer thinner
containers in
main building



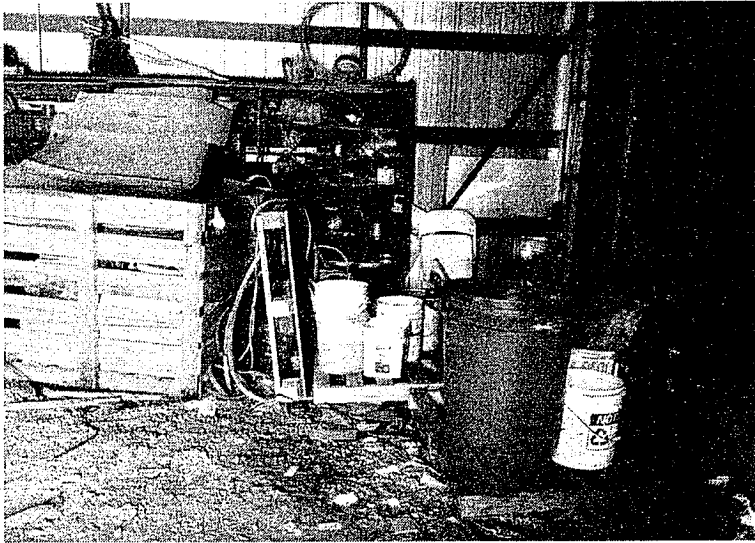
Photograph 34:
View of hydraulic
fluid containers in
main building



Photograph 35:
View of stained
shovel and floor
in main building

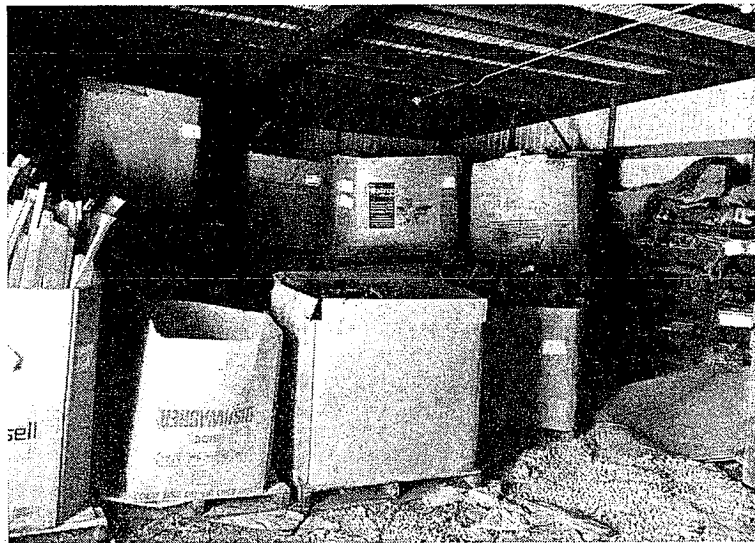


Photograph 36:
View of stained
soil north of the
garage, facing
southwest



Photograph 37:

View of east garage interior including light fixtures on shelves, facing south



Photograph 38:

View of east garage interior including boxes of scrap metal, facing southeast

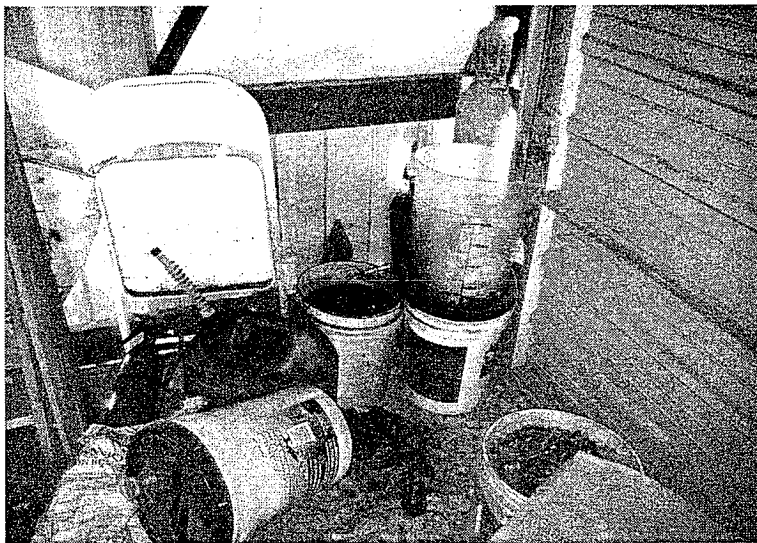


Photograph 39:

View of household batteries in east garage



Photograph 40:
View of unlabeled
containers in east
garage, some full
of fluid, possibly
used oil



Photograph 41:
View of
containers in east
garage, possible
floor stain,
possible used oil
with no lid